

GENERAL NOTES - THIS SHEET

- HVAC UNIT & SUPPORTS FURNISHED & INSTALLED BY MECH. CONTRACTOR. UNIT SIZE, INSTALLATION, ETC., TO BE COORDINATED WITH GC & FRAMING CONTRACTOR.
- AIR HANDLER RETURN THROUGH DOOR LOUVER. SEE ARCHITECTURAL PLANS FOR DOOR INFORMATION. INSTALL TYPE 'C' 18"x6" "DUMMY" GRILLE ON WALL ABOVE DOOR CLOSE TO CEILING. CONFIRM WITH ARCHITECT WHICH DIRECTION BLADES ARE FACING BEFORE INSTALLATION. GRILLE IS PROVIDED AS ADDITIONAL MEANS OF RETURN AIR BUT MAY ALSO BE USED AS ACCESS TO DAMPER IN DUCT IF REQUIRED. COMBINED TOTAL FREE AREA OF DOOR AND LOUVER TO BE A MINIMUM OF:
2.5 TON UNIT = 2.0 SQFT
- 1" CONDENSATE DRAIN ROUTED TO HUB DRAIN (HD BY PC) IN MECH. CLOSET. REFER TO PLUMBING RISERS. COORDINATE W/ DUCTS, G.C., FRAMING CONTR., STRUCTURE, ETC.
- SUPPLY AIR PLENUM OFF AIR HANDLING UNIT SHALL BE MIN. 4" LONG. TYPICAL ALL UNITS.
- SUPPLY AIR DUCT TRUNK TO RUN BETWEEN JOISTS. CONFIRM DIRECTION OF JOISTS DURING CONSTRUCTION AND ROTATE TRUNK 90° IF REQUIRED.
- M.C. TO PROVIDE RECESSED BOX FOR DRYER VENT CONNECTION (BOX MUST BE APPROPRIATELY FIRE RATED IF INSTALLED IN A RATED WALL). MOUNT DRYER BOX AT 6" A.F.F. FOR FLOOR MOUNTED DRYER. ON LOWEST FLOOR, 4" DRYER VENT TO RUN FROM TOP OF DRYER BOX UP INTO FLOOR/CEILING ASSEMBLY ABOVE. ON UPPER FLOORS, 4" DRYER VENT TO RUN DOWN FROM BOTTOM OF BOX TO FLOOR/CEILING ASSEMBLY BELOW.
- DRYER VENT PIPE SHALL BE 4" SINGLE WALL RIGID SHEETMETAL PER MECH. CODE. AT WALL TERMINATION, M.C. TO PROVIDE 4" VENT CAP WITH BACKDRAFT DAMPER & TO CAULK BEHIND CAP WITH 100% SILICONE.
- BATHROOM EXHAUST DUCT SHALL BE 4" SINGLE WALL RIGID SHEETMETAL. AT WALL TERMINATION, M.C. TO PROVIDE 4" VENT CAP WITH BACKDRAFT DAMPER & INSECT SCREEN & TO CAULK BEHIND CAP WITH 100% SILICONE.
- ALL BATHROOM DOORS TO HAVE UNDERCUTS FOR AIR TRANSFER.
- ALL ROOMS WITH SUPPLY AIR TO HAVE 1" DOOR UNDERCUTS FOR RETURN.
- AN APPROVED RECIRCULATING RANGE HOOD IS TO BE INSTALLED ABOVE KITCHEN RANGE.
- PROVIDE TRANSFER GRILLES FOR MAKE-UP AIR TO LAUNDRY ROOM AS SHOWN. MIN. FREE AREA OF 120 SQIN IS REQUIRED. INSTALL GRILLES HIGH ON WALL.

DRYER VENT LENGTH

UNIT 4	LOWER FLOOR	UPPER FLOORS
VERTICAL RUN	9'	1'
90° ELBOW	41.5'	41.5'
STRAIGHT RUN	46.5'	46.5'
TOTAL	57'	49'

NOTE: M.C. IS TO PROVIDE AND INSTALL PERMANENT SIGNS WITHIN 6 FT OF EACH EXHAUST DUCT CONNECTION WHICH STATE THE EQUIVALENT LENGTH AND NUMBER OF ELBOWS FOR THE DRYER VENT RUN AS INSTALLED PER 2012 NCHC SECTION 504.6.5.

DRYERS PROVIDED BY OWNER. VENT LENGTHS SHOWN MUST NOT EXCEED MAXIMUM LENGTH REQUIREMENTS FOR DRYER MODEL SELECTED. SEE DETAIL SHEET M10.03 FOR ADDITIONAL MFG VENTING INFORMATION.

*PROVIDE LONG-RADIUS ELBOW TO REDUCE EQUIVALENT LENGTH OF DRYER DUCT.

VENTILATION CALCULATIONS

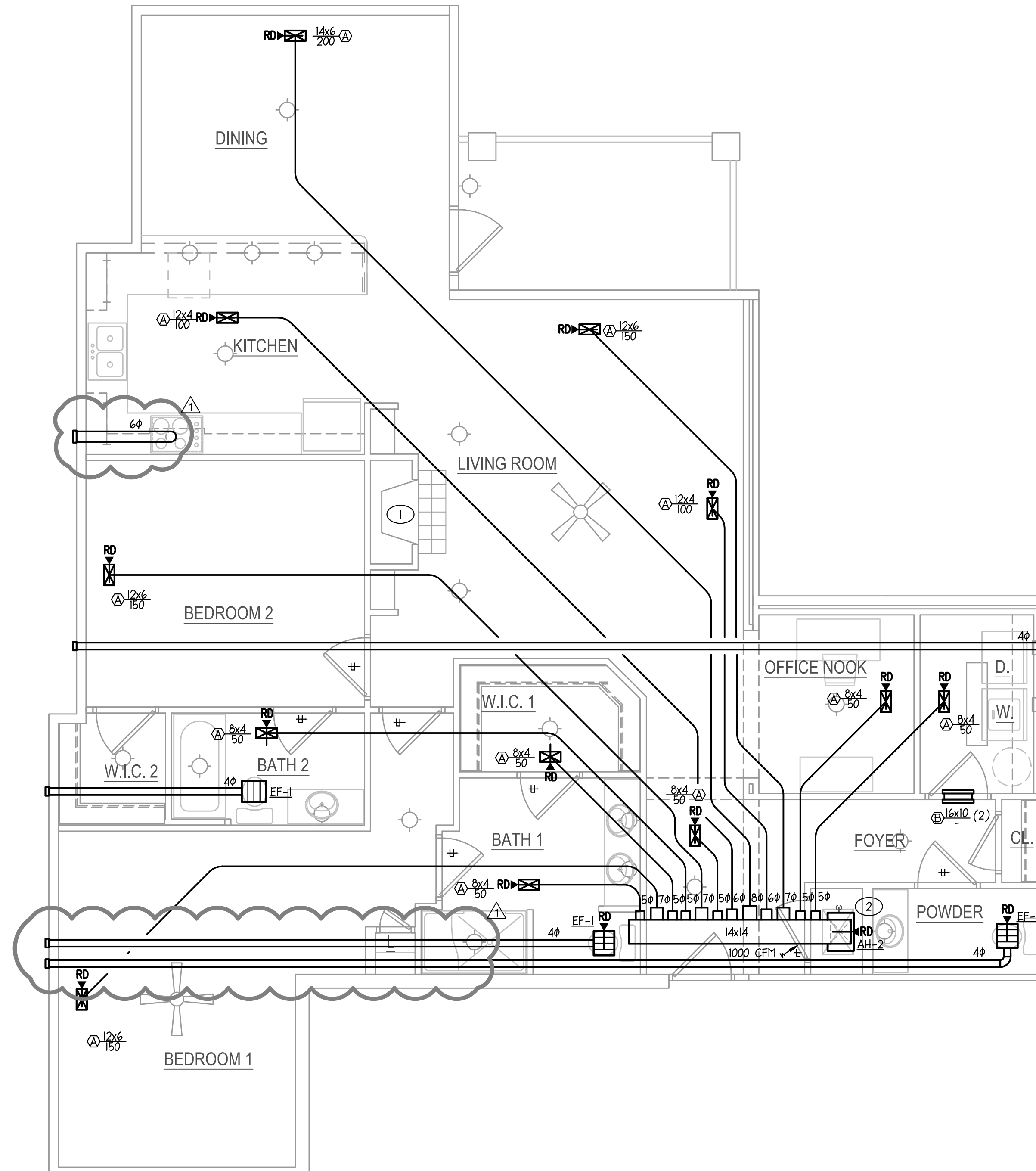
CALCULATIONS BASED ON THE 2012 NCHC SECTION 402.2

UNIT 4:

FLOOR AREA	= 1605 SQFT
OPERABLE EXTERIOR OPENINGS	= 116 SQFT
OPERABLE OPENING AREA %	= 7.3% (> 4%)

TAGGED NOTES - THIS SHEET

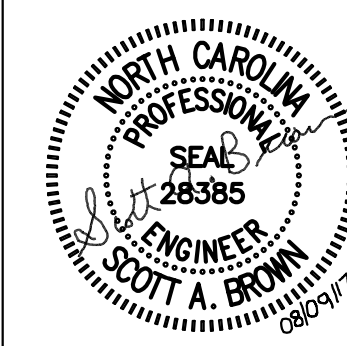
- VENTLESS FIREPLACE.
- AH TO BE SUPPORTED BY FILTER RACK. M.C. TO FABRICATE RACK.



1 UNIT 4
1/4" = 1'-0"

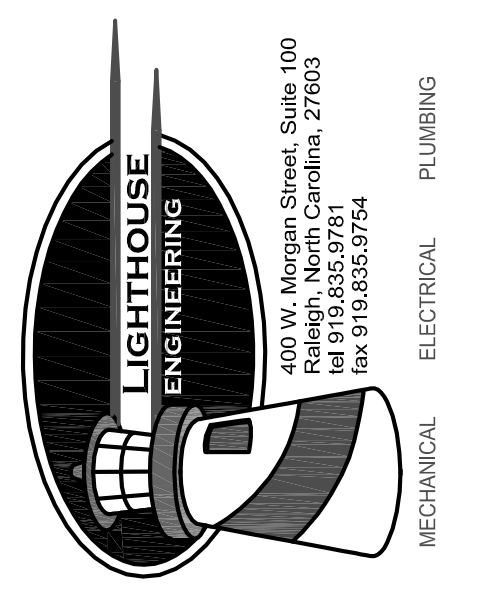
UNITS REARRANGED,
FLEX DUCT REARRANGED

Concordia Building Company
Nantucket Condominiums
700 Waterford Lake Drive Cary, NC



PROJECT:	WOP-05115	DATE	06.16.2017
REVISIONS:			
1	CITY COMMENTS		08.07.17
DRAWN BY:	PWI		
CHECKED BY:	SAB		
CONTENT:	MECHANICAL		
	UNIT PLAN		

M4.03



©2016 LIGHTHOUSE ENGINEERING, P.A. EXPRESSLY RESERVES ITS COMMON LAW COPYRIGHT AND OTHER PROPERTY RIGHTS IN THESE PLANS. THESE PLANS ARE NOT TO BE REPRODUCED, CHANGED OR COPIED IN ANY FORM OR MANNER WHATSOEVER, NOR ARE THEY TO BE ASSIGNED TO ANY THIRD PARTY WITHOUT FIRST OBTAINING THE EXPRESSED WRITTEN PERMISSION AND CONSENT OF LIGHTHOUSE ENGINEERING, P.A.