

WALL LEGEND:

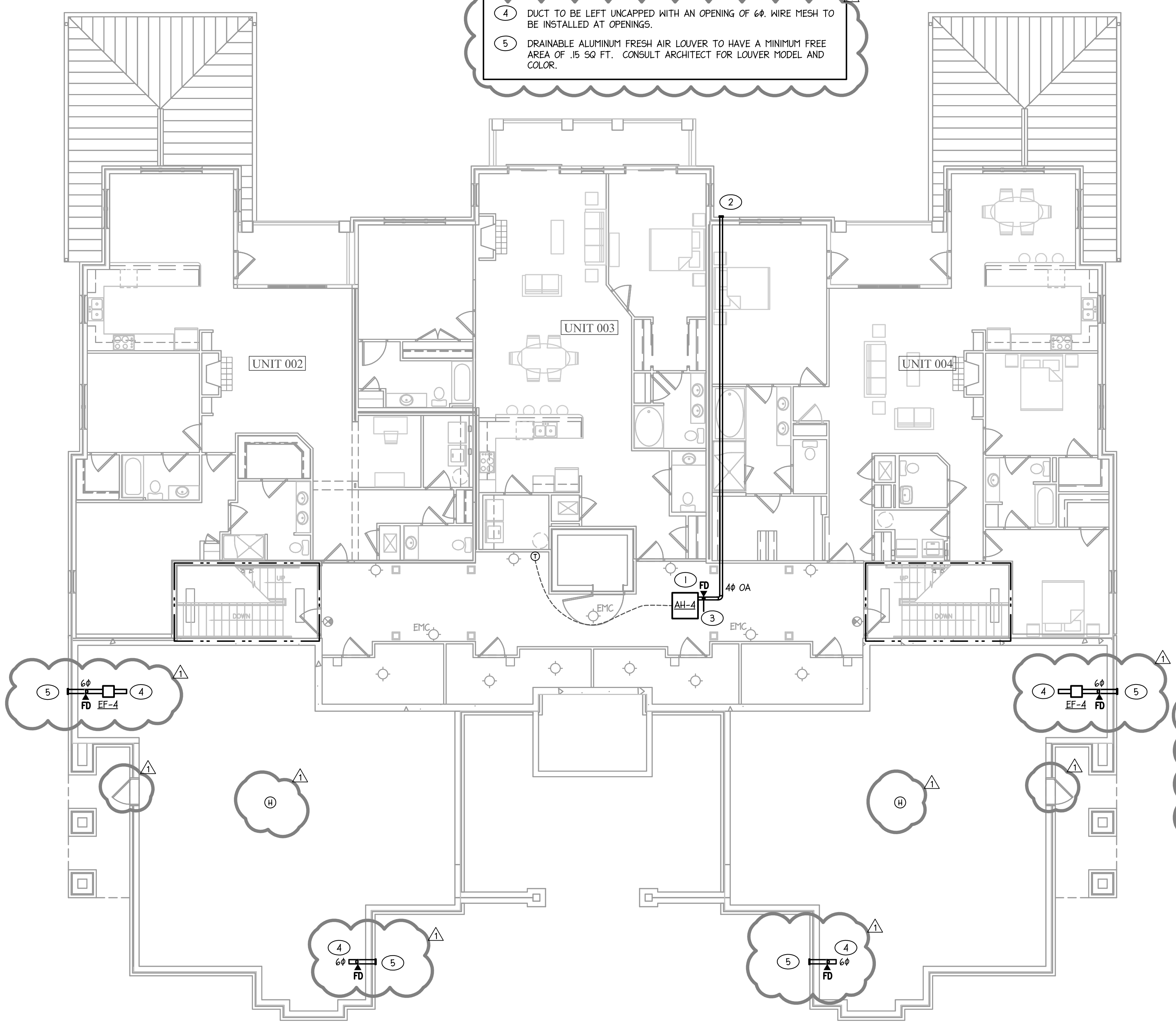
| | |
|--|-------------------------|
| | 1-HR FIRE BARRIER, U356 |
| | 1-HR FIRE PARTITION |
| | 2-HR WALL |

- TAGGED NOTES - THIS SHEET**
- 1/2" CONDENSATE DRAIN ROUTED TO EXTERIOR, DOWN TO GRADE, TOWARDS STORM RUN-OFF, AWAY FROM FOOT TRAFFIC. COORDINATE W/ DUCTS, G.C., FRAMING CONTR., STRUCTURE, ETC.
 - DRAINABLE FRESH AIR LOUVER TO HAVE A MINIMUM FREE AREA OF .08 SQ FT. CONSULT ARCHITECT FOR LOUVER MODEL AND COLOR.
 - UNIT TO BE LOCATED IN DROPPED CEILING. ACCESS PANEL REQUIRED FOR FIRE DAMPER.
 - DUCT TO BE LEFT UNCAPPED WITH AN OPENING OF 6". WIRE MESH TO BE INSTALLED AT OPENINGS.
 - DRAINABLE ALUMINUM FRESH AIR LOUVER TO HAVE A MINIMUM FREE AREA OF .15 SQ FT. CONSULT ARCHITECT FOR LOUVER MODEL AND COLOR.

VENTILATION CALHPLATIONS

CALHPLATIONS BASED ON THE 2012 NCMC TABLE 403.3

AH-4
CORRIDORS
= (600 SQFT) X (0.06 CFM/SQFT)
= 36 CFM
AH-4 PROVIDES 36 CFM



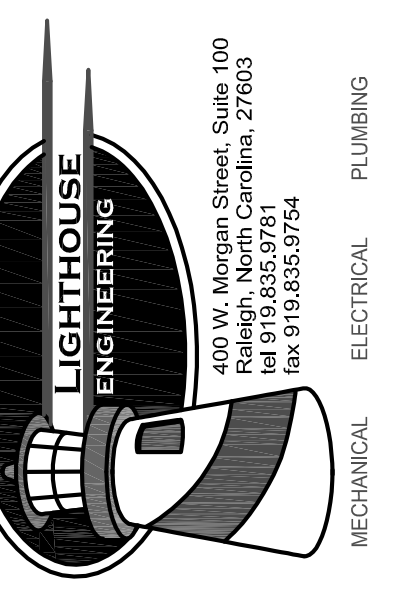
EXHAUST CALCULATIONS

CALCULATIONS BASED ON THE 2012 NCMC SECTION 406.1

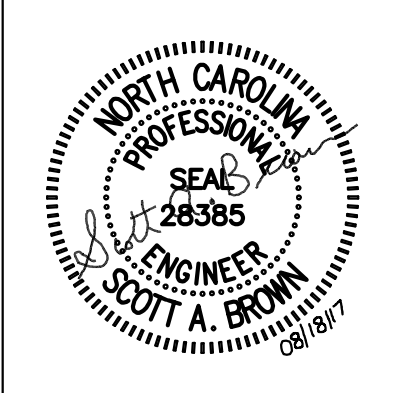
CRAWLSPACE:
= 1380 SQFT X (0.02 CFM / SQFT) = 27.6 CFM
EF-4 PROVIDES 75 CFM

1 RESIDENTIAL LEVEL 1
1/8" = 1'-0"

©2016 LIGHTHOUSE ENGINEERING, PA. EXPRESSLY RESERVES ITS COMMON LAW COPYRIGHT AND OTHER PROPERTY RIGHTS IN THESE PLANS. THESE PLANS ARE NOT TO BE REPRODUCED, CHANGED OR COPIED IN ANY FORM OR MANNER WHATSOEVER, NOR ARE THEY TO BE ASSIGNED TO ANY THIRD PARTY WITHOUT FIRST OBTAINING THE EXPRESSED WRITTEN PERMISSION AND CONSENT OF LIGHTHOUSE ENGINEERING, PA.



Concordia Building Company
Nantucket Condominiums
700 Waterford Lake Drive Cary, NC



| PROJECT: | WOP-05115 | DATE | 06.16.2017 |
|-------------|---------------|------|------------|
| REVISIONS: | | | |
| | CITY COMMENTS | | 08.07.17 |
| | | | |
| | | | |
| DRAWN BY: | PWI | | |
| CHECKED BY: | SAB | | |
| CONTENT: | MECHANICAL | | |
| | BUILDING PLAN | | |

M2.01