

GENERAL NOTES: (UNIT PLANS)

- ALL CIRCUIT NUMBERS SHOWN TO RESPECTIVE UNIT PANEL, UNLESS OTHERWISE NOTED.

TAGGED NOTES: (UNIT PLANS)

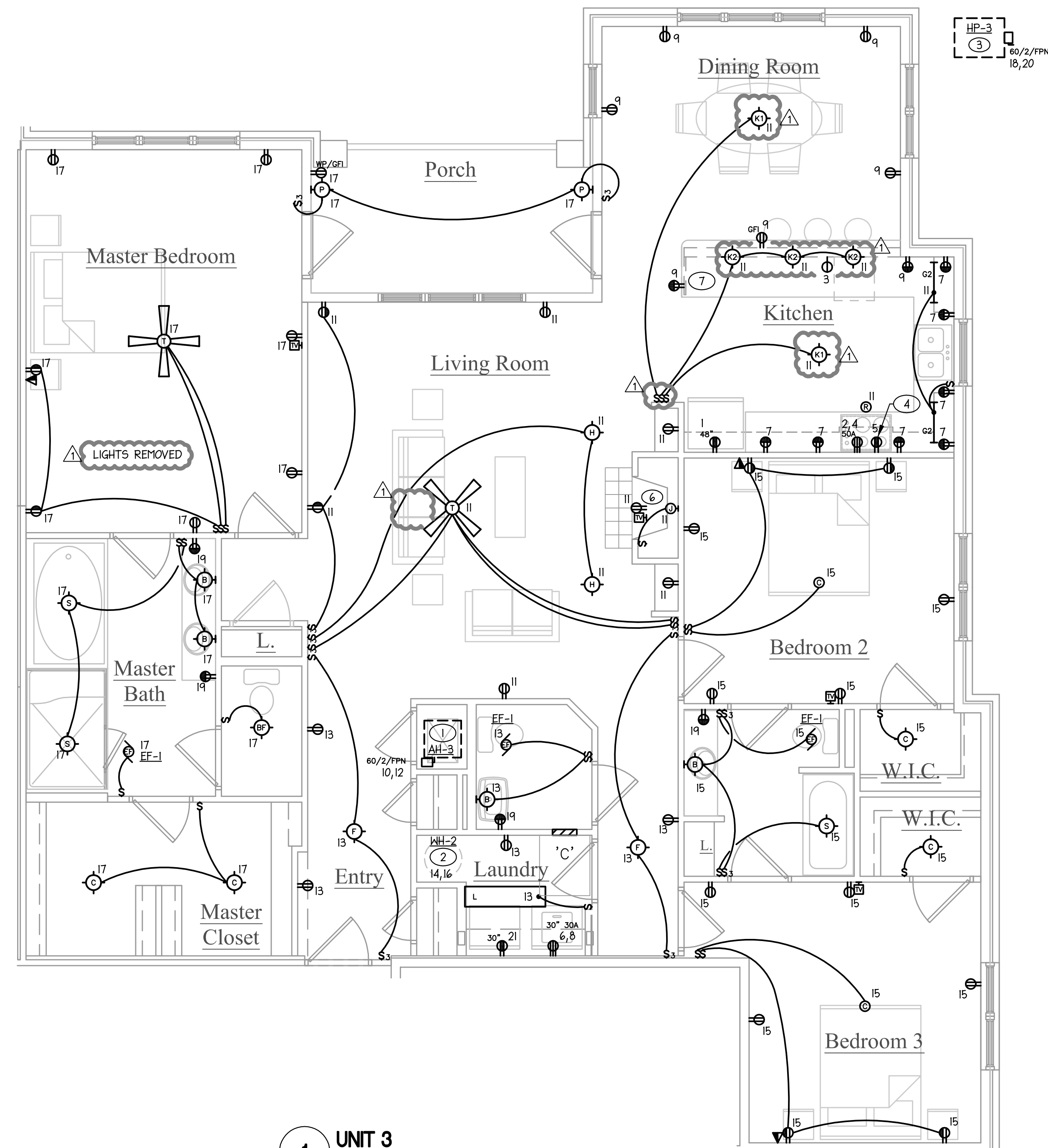
- PROVIDE A FUSE DISCONNECT SWITCH FOR EACH UNIT'S AIR HANDLER. SEE UNIT PANEL SCHEDULE FOR ACTUAL WIRE AND BREAKER SIZE. DISCONNECT SHALL BE INSTALLED TO PERMIT REQUIRED WORKING CLEARANCE.
- CIRCUIT FOR EACH UNIT'S WATER HEATER. SEE UNIT PANEL SCHEDULE FOR ACTUAL WIRE AND BREAKER SIZE. DISCONNECT SHALL BE BREAKER WITH LOCK-OFF DEVICE.
- SEE BUILDING PLANS FOR HEAT PUMP UNIT LOCATIONS.
- PROVIDE RECEPTACLE IN CABINET SPACE ABOVE RANGE FOR FUTURE MICROWAVE. COORDINATE LOCATION WITH MILLWORK.
- MOUNT RECEPTACLES HORIZONTAL ABOVE BACKSPLASH.
- E.C. SHALL COORDINATE EXACT FIREPLACE REQUIREMENTS WITH FIREPLACE MANUFACTURER. MOUNT RECEPTACLE AND CATV OUTLET ABOVE MANTLE.
- MOUNT RECEPTACLES HORIZONTAL 6" BELOW COUNTER TOP.

PANEL: C											
VOLTAGE: 240/120V AMP: 150 - MLO											
1 PHASE 3 WIRE FLUSH MOUNTED NEMA 1											
- DESCRIPTION -	POL	WIRE SIZE	BRK SIZE	LOAD PER PHASE		CCT #	BRK SIZE	WIRE SIZE	POL	- DESCRIPTION -	L
				A	B						
AFI REFRIGERATOR	1	12	20	1	0.7/4.0	2	50	6	2	RANGE	
AFI DISHWASHER	1	14	15	3	1.1/4.0	4	30	6	2	DRYER	
AFI MICROWAVE	1	12	20	5	1.5/2.5	6	30	10	2		
AFI KITCHEN APPLIANCES	1	12	20	7	1.5/2.5	8	50	6	2	AH-3	
AFI KITCHEN APPLIANCES	1	12	20	9	1.5/4.6	10	50	6	2	WH-2	
AFI LTS/RECEPTACLES	1	14	15	11	1.3/4.7	12	40	8	2	WH-2	
AFI LTS/RECEPTACLES	1	14	15	13	1.3/3.0	14	40	8	2	WH-2	
AFI LTS/RECEPTACLES	1	14	15	17	1.3/2.3	18	30	10	2	HP-3	
AFI BATHROOM RECEPTACLES	1	12	20	19	0.7/2.3	20	-	-	-		
AFI WASHER	1	12	20	21	1.5/-	22	-	-	-	SPACE	
AFI SPACE	1	-	-	23	-/-	24	-	-	-	SPACE	
AFI SPACE	1	-	-	25	-/-	26	-	-	-	SPACE	
AFI SPACE	1	-	-	27	-/-	28	-	-	-	SPACE	
AFI SPACE	1	-	-	29	-/-	30	-	-	-	SPACE	
TOTAL CONNECTED KVA				24.2	22.4	DEMAND KVA: 29.9					
PANEL RMS SYM. AMP: SEE RISER				46.6	DEMAND AMP: 125						

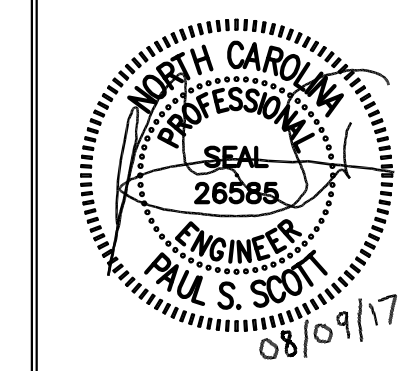
- PANEL SHALL BE EQUAL TO SQUARE D QO LOAD CENTER SERIES.
- PROVIDE HACR BREAKERS FOR HVAC EQUIPMENT.
- PROVIDE SMO/HID RATED BREAKERS FOR LIGHTING CIRCUITS.
- * - PROVIDE ARC FAULT CIRCUIT INTERRUPT BREAKER.
- L - INDICATES LOCK-ON ATTACHMENT REQUIRED.

LOAD DEMAND CALCULATION - RESIDENTIAL
NEC SECTION 220-82

LOAD DESCRIPTION	KVA
UNIT TYPE: 004, 102, 104, 204, 304	
SYSTEM VOLTAGE: 240/120V, 1Ø, 3Ø	
SERVICE SIZE: 150 AMP	
SQUARE FEET: 1937	
LIGHTING & RECEPTACLES (SQUARE FEET X 3 VA)	6.0
SMALL APPLIANCES (2 CIRCUITS X 1.5 KVA/CIRCUIT)	3.0
ELEC. CLOTHES DRYER	5.0
WASHER	1.5
RANGE	8.0
DISHWASHER	1.1
WATER HEATER	6.0
REFRIGERATOR	0.7
MICROWAVE	1.5
TOTAL	32.8
FIRST 10 KVA AT 100%	10.0
REMAINDER AT 40%	9.1
HEAT PUMP	4.6
AIR HANDLER	1.0
STRIP HEAT AT 65%	5.2
HEATING AT 100%	10.8
TOTAL RESIDENTIAL KVA	29.9



Concordia Building Company
Nantucket Condominiums
 700 Waterford Lake Drive Cary, NC



PROJECT:	WOP-05115	DATE	06.16.2017
REVISIONS:			
1	CITY COMMENTS		08.07.17
DRAWN BY:	PSS		
CHECKED BY:	PSS		
CONTENT:	ELECTRICAL		
	UNIT PLAN		

E4.02