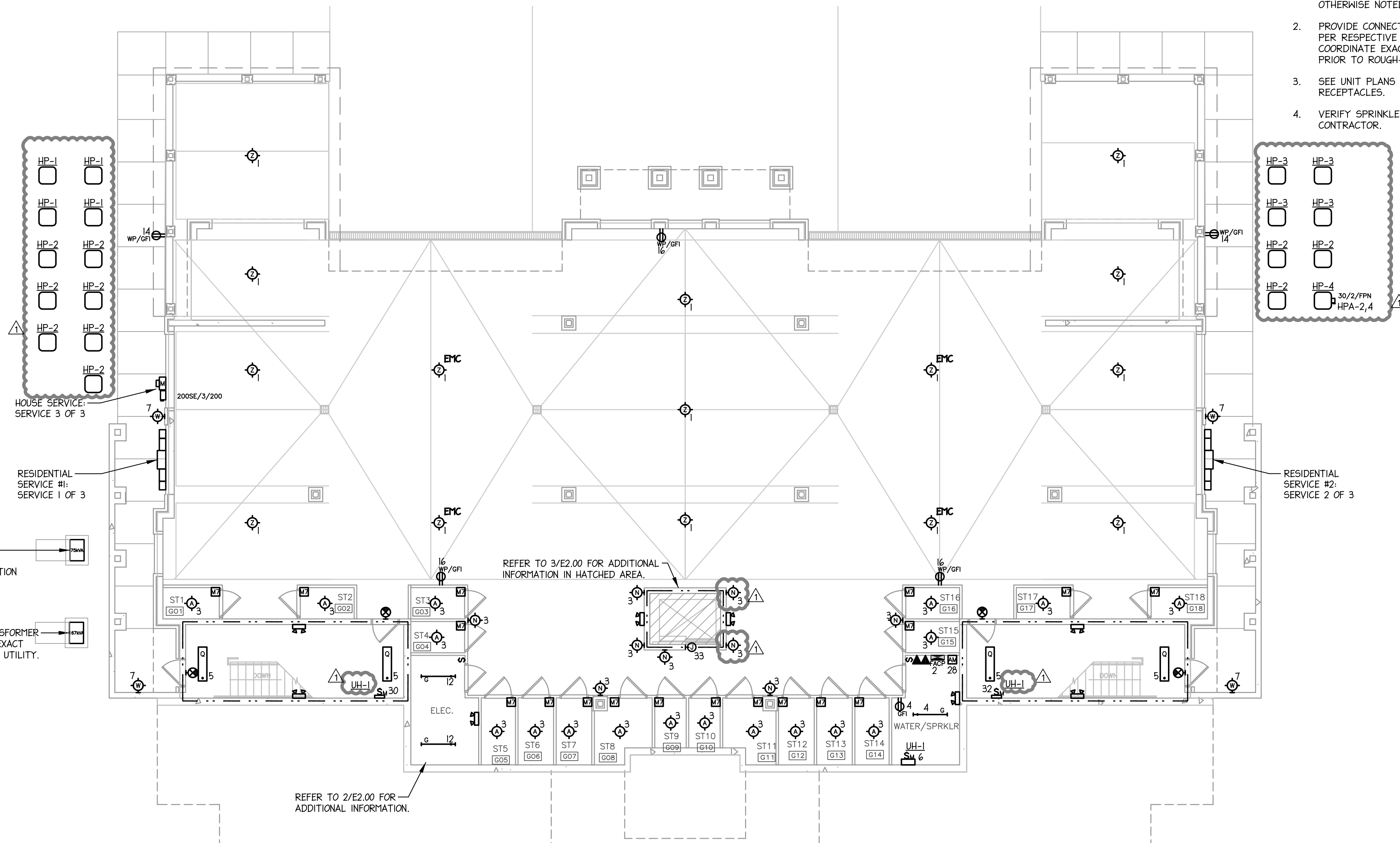


WALL LEGEND:	
	1-HR FIRE BARRIER, U356
	1-HR FIRE PARTITION
	2-HR WALL

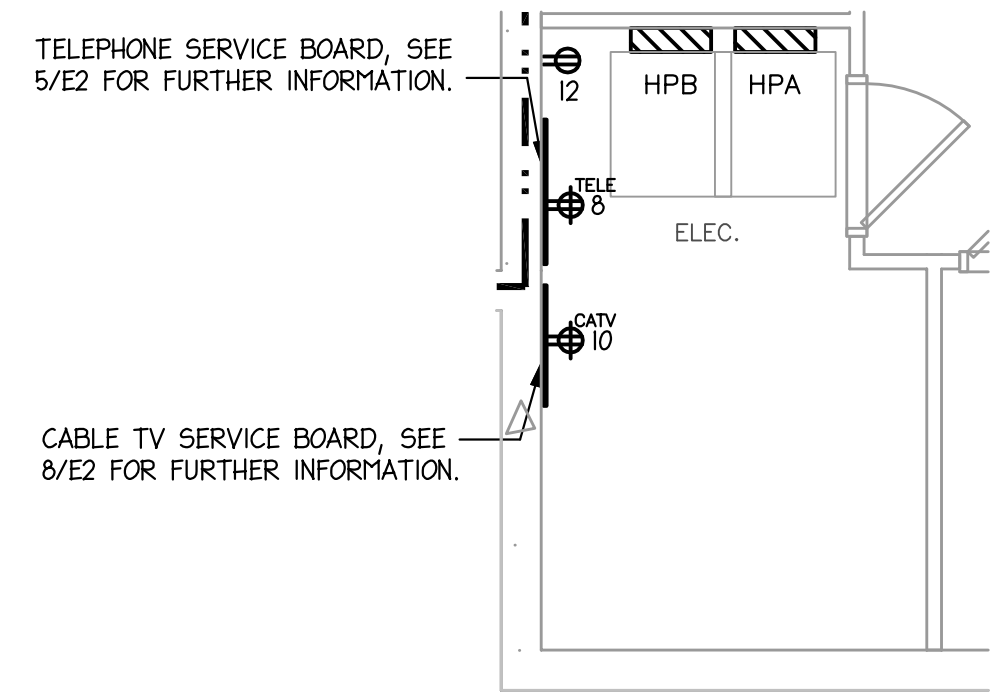
**GENERAL NOTES: (BUILDING PLANS)**

1. ALL CIRCUIT NUMBERS SHOWN TO PANEL HPB, UNLESS OTHERWISE NOTED.
2. PROVIDE CONNECTION TO DISCONNECT FOR CONDENSING UNIT PER RESPECTIVE UNIT PLAN AND PANEL SCHEDULE. COORDINATE EXACT LOCATION WITH MECHANICAL CONTRACTOR PRIOR TO ROUGH-IN. CONNECT TO CIRCUIT 18,20 TYPICAL.
3. SEE UNIT PLANS FOR ADDITIONAL EXTERIOR LIGHTING AND RECEPTACLES.
4. VERIFY SPRINKLER RISER ROOM LOCATION WITH SPRINKLER CONTRACTOR.



PROPOSED 208Y/120V TRANSFORMER LOCATION. COORDINATE EXACT LOCATION WITH CIVIL AND UTILITY.

PROPOSED 240/120V TRANSFORMER LOCATION. COORDINATE EXACT LOCATION WITH CIVIL AND UTILITY.



**2 ENLARGED ELECTRICAL RM**  
1/4" = 1'-0"

**1 BASEMENT GARAGE LEVEL**  
1/8" = 1'-0"

**3 ENLARGED ELEV. PIT**  
1/4" = 1'-0"

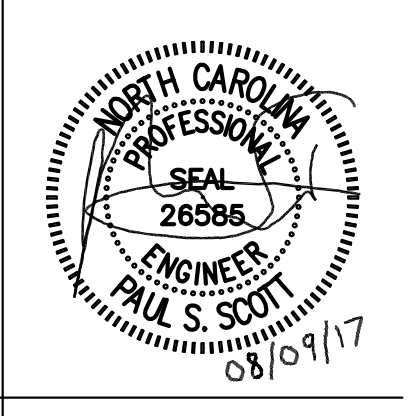
TAGGED NOTES:  
1 CIRCUIT LIGHTS AHEAD OF GFI RECEPTACLE IN ELEV. PIT.

**J DAVIS**  
510 S. Wilmington Street | Raleigh, North Carolina 27601 | Tel: 919.835.1500 | Fax: 919.835.1510

**LIGHTHOUSE ENGINEERING**  
400 W. Morgan Street, Suite 100  
Raleigh, North Carolina, 27603  
Tel: 919.835.8754

MECHANICAL ELECTRICAL PLUMBING

Concordia Building Company  
**Nantucket Condominiums**  
700 Waterford Lake Drive Cary, NC



PROJECT:	WOP-05115	DATE	06.16.2017
REVISIONS:			
1	CITY COMMENTS		08.07.17
DRAWN BY:	PSS		
CHECKED BY:	PSS		
CONTENT:	ELECTRICAL		
	BUILDING PLAN		

**E2.00**